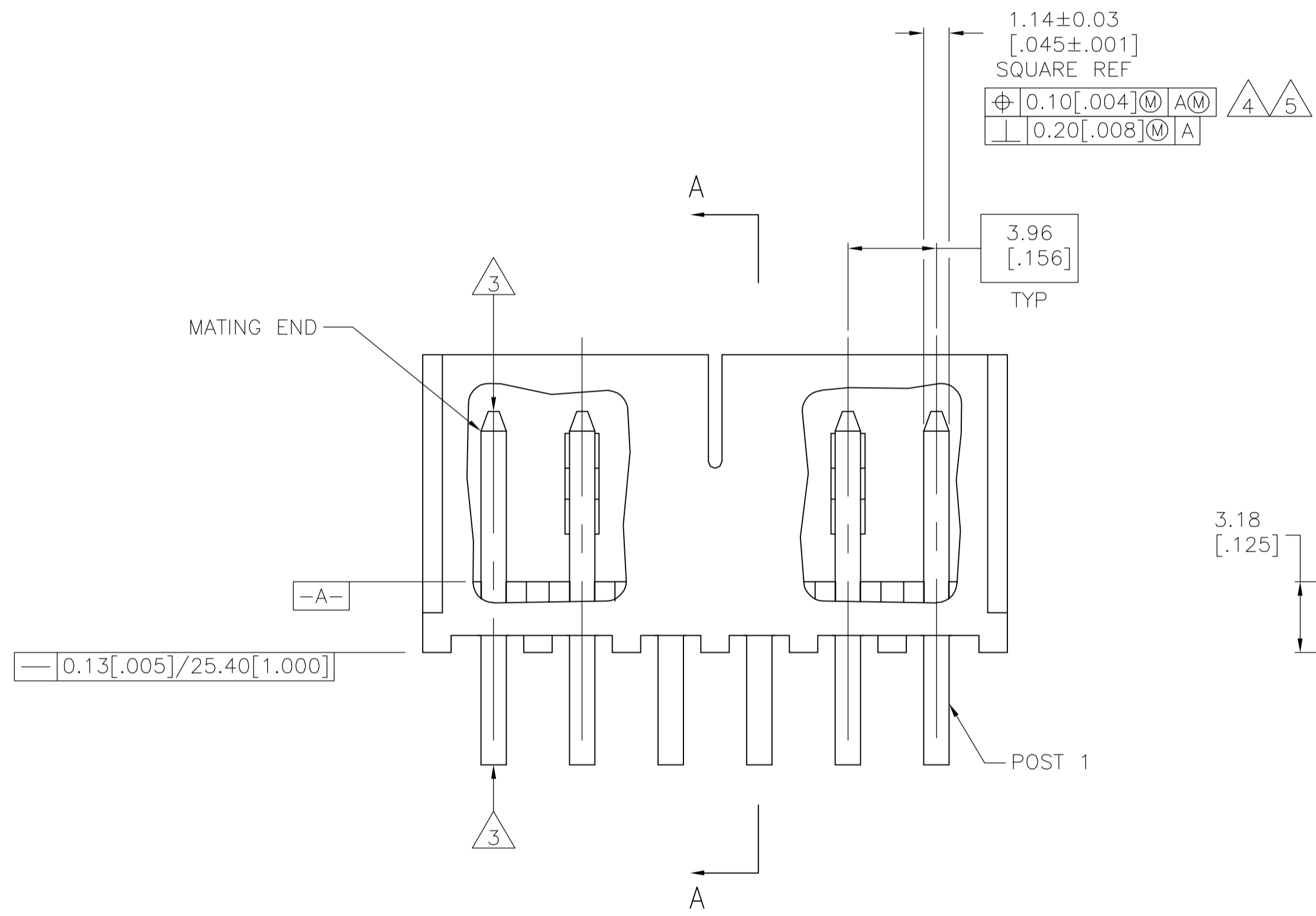


4 7
 2.29±0.08
 [.090±.003]
 TYP

0.89
 [.035]
 REF

0.13[.005]/25.40[1.000]

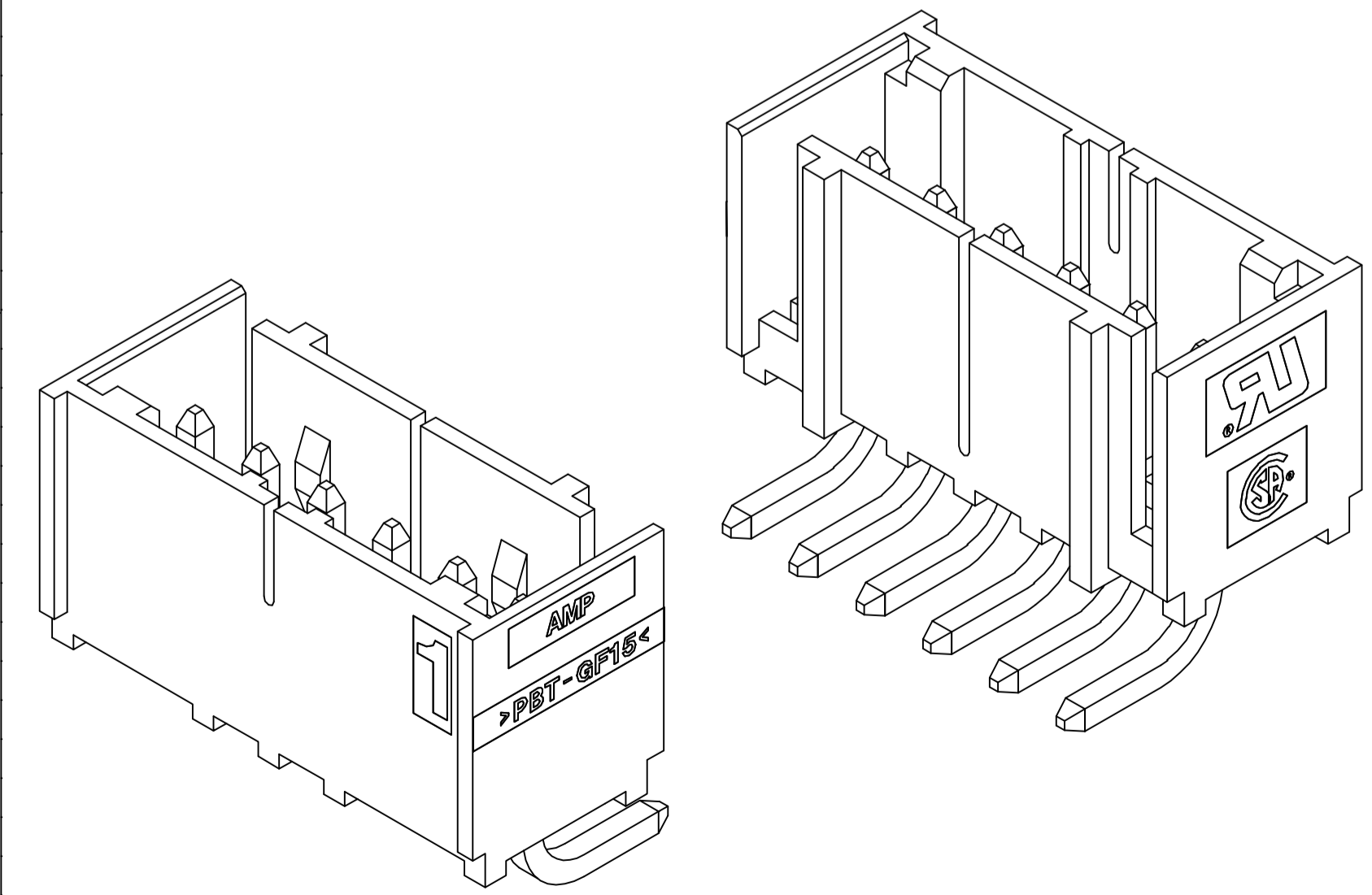
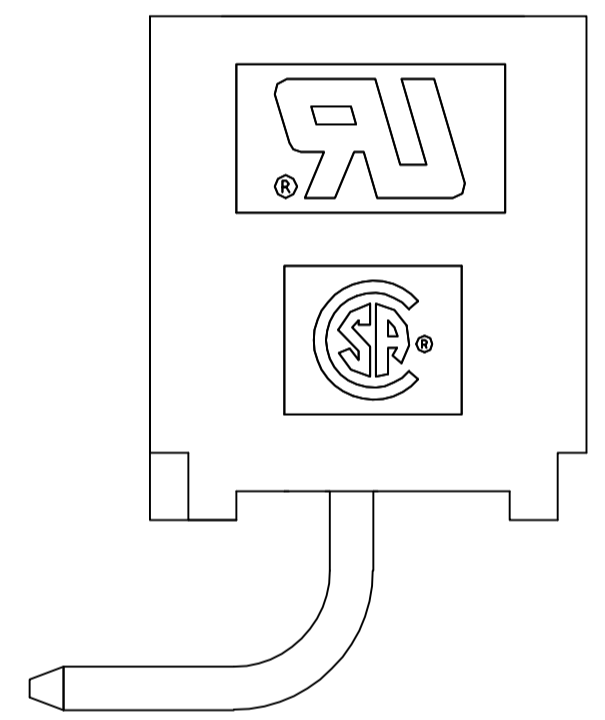


1.14±0.03
 [.045±.001]
 SQUARE REF

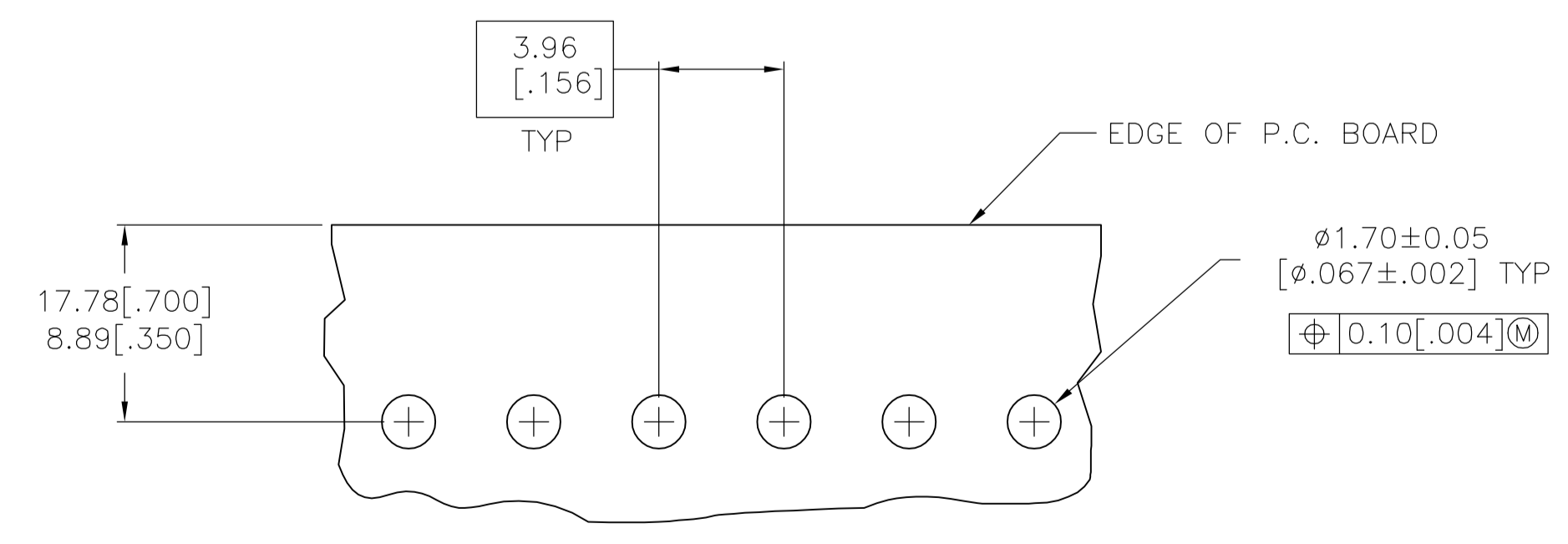
4 5
 0.10[.004] M A M
 0.20[.008] M A

3.96
 [.156]
 TYP

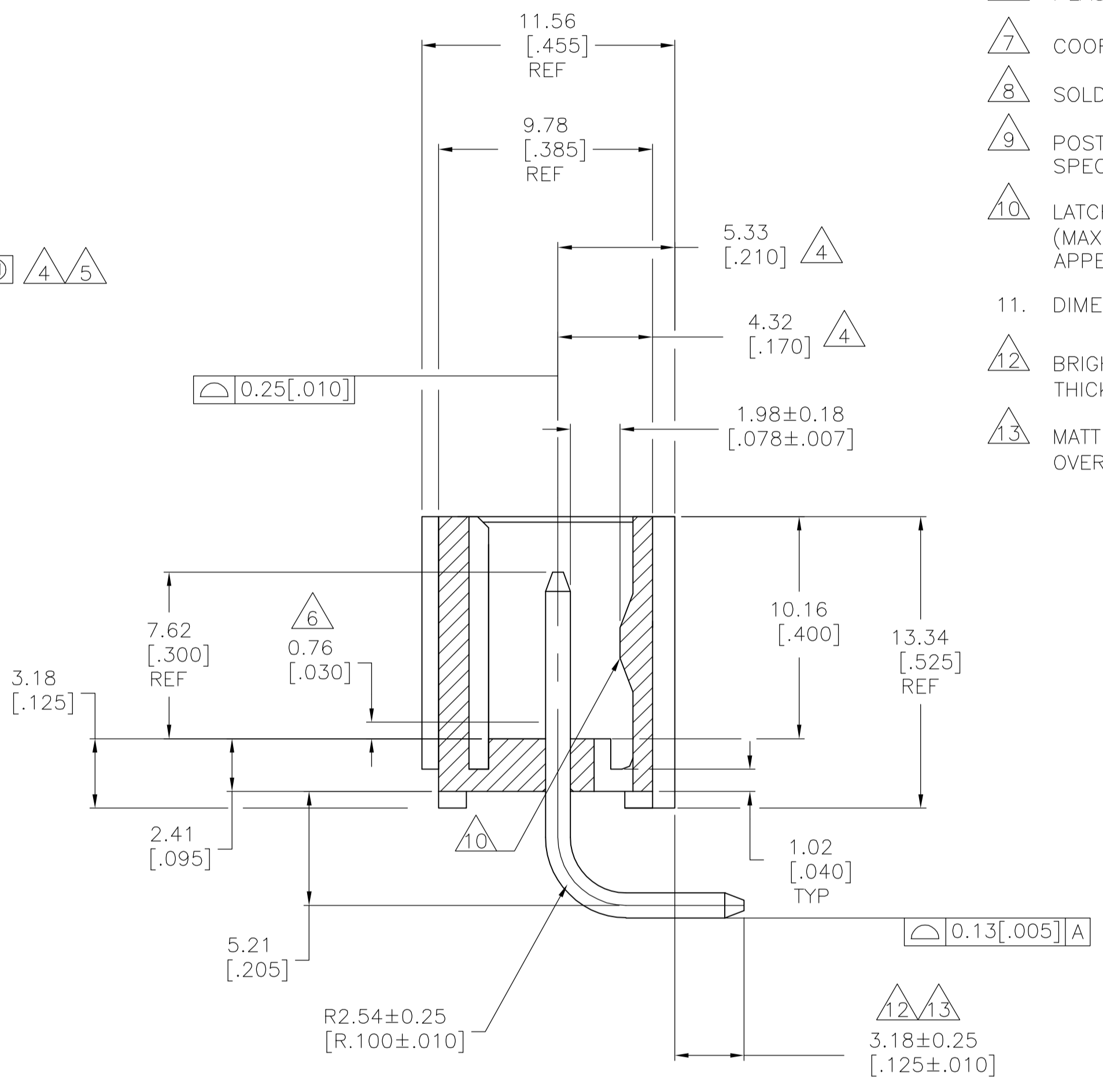
0.13[.005]/25.40[1.000]



3-DIMENSIONAL MODEL NTS



RECOMMENDED MOUNTING HOLE PATTERN FOR 1.57[.062] THICK P.C. BOARD



SECTION A-A

- 1 MATERIAL:
HOUSING — THERMOPLASTIC POLYESTER, GLASS FILLED, UL94-0.
POST — COPPER ALLOY
- 2 FINISH:
HOUSING — BLACK
POST — SEE NOTES 12 AND 13.
- 3 POST TO WITHSTAND 3LBS (16N) MIN AXIAL FORCE IN THIS DIRECTION WITHOUT DISLODGING.
- 4 APPLIES AT -A-.
- 5 APPLIES WHEN HEADER IS STRAIGHT.
- 6 PLASTIC PROJECTIONS PERMITTED IN THIS ZONE.
- 7 COORDINATE DIMENSIONS APPLIES FROM CENTER OF ACTUAL FEATURE.
- 8 SOLDER SIDE OF BOARD IS SHOWN.
- 9 POST SOLDERTAIL MUST COMPLY WITH AMP SOLDERABILITY SPEC 109-11-2.
- 10 LATCH DETENT FEATURE APPEARS 1 PLACE ON EACH END OF PART (MAX OF 2 PER PART) ON ALL POSITIONS 4 THRU 12. THE LATCH APPEARS ONLY ONE PLACE ON 2 & 3 POSITION PARTS.
- 11. DIMENSIONS IN BRACKETS ARE IN INCHES.
- 12 BRIGHT TIN LEAD (93/7) PLATE 0.00381 - 0.00889 [.000150 - .000350] THICK, OVER NICKEL UNDERPLATE 0.00127 [.000050] MIN THICK.
- 13 MATTE TIN PLATE 0.00381 - 0.00889 [.000150 - .000350] THICK, OVER NICKEL UNDERPLATE 0.00127 [.000050] MIN THICK.

647126-6 SHOWN

13	49.94	1.966	12	3-647126-2
	45.97	1.810	11	3-647126-1
	42.01	1.654	10	3-647126-0
	38.05	1.498	9	2-647126-9
	34.09	1.342	8	2-647126-8
	30.12	1.186	7	2-647126-7
	26.16	1.030	6	2-647126-6
	22.20	.874	5	2-647126-5
	18.24	.718	4	2-647126-4
	14.27	.562	3	2-647126-3
10.31	.406	2	2-647126-2	
12	49.94	1.966	12	1-647126-2
	45.97	1.810	11	1-647126-1
	42.01	1.654	10	1-647126-0
	38.05	1.498	9	647126-9
	34.09	1.342	8	647126-8
	30.12	1.186	7	647126-7
	26.16	1.030	6	647126-6
	22.20	.874	5	647126-5
	18.24	.718	4	647126-4
	14.27	.562	3	647126-3
10.31	.406	2	647126-2	
PLATING	MM	IN	NO. OF POSN	PART NUMBER
	L DIM			

THIS DRAWING IS A CONTROLLED DOCUMENT.

DIMENSIONS: mm [INCHES]	TOLERANCES UNLESS OTHERWISE SPECIFIED:	DIN 9137	17JUN98	tyco Electronics	Tyco Electronics Corporation Harrisburg, PA 17105-3608
0 PLC ± -	1 PLC ± -	DRG	17JUN98	NAME	MTA-156 SHROUDED HEADER ASSEMBLY, RIGHT ANGLE REAR BEND .045 SQUARE POST, TIN, W/O RETENTION PEG
2 PLC ± -	3 PLC ± .005	APP		SIZE	A1
4 PLC ± -	ANGLES ± -	FIN		WEIGHT	00779
MATERIAL	FINISH	REV		CUSTOMER DRAWING	SCALE 5:1 SHEET 1 OF 1 REV D

